

Look
what
we can

OFFER



Revised
2023



Combe Pafford School

www.combepaffordschool.co.uk

Welcome to Combe Pafford Sixth Form

I am pleased to introduce you to our Sixth Form prospectus. Its purpose is to help you, the students and parents, understand the options on offer here and help you make the transition between school and the world of work and adult life.

Our courses and experiences include work placements and qualifications at Entry Level, Level 1 and Level 2 – with the major focus being on improving employment potential and to help get that crucial first step on the ladder towards work. Combe Pafford is well known in Torbay and South Devon as a high performing school, but perhaps less so as a very well-resourced provider of post 16 courses.

One of our key aims is to raise awareness in young people of their need to contribute to the local economy. Our course deliver the skills needed for them to advance confidently into higher level training, an apprenticeship or employment, and meet the requirements of employers.

We are very proud of our Vocational Centres, which are some of the most modern in the area and purpose built to provide realistic working environments for the students. These facilities are very well resourced and include our Yellow Frog Café and our hair salon, both of which are open to the public; a construction hall; a large industrial garage; The Ark Animal Care Centre and a horticulture base.

We boast solid links with employers, and have developed key partnerships to ensure we provide a rich variety of work placements, all of which contribute significantly to the quality of our courses.

The learning experience here is maintained by qualified tutors and specialist support staff. The groups are small enough to allow one to one contact with tutors, and ensure everyone progresses at their own rate.

We are lucky enough to have a specialist Careers Advisor, Steph Morgan, who will be at your disposal to help to make that all important next step into employment and training.

I hope that you find the prospectus informative and helpful. If you have other questions, our Head of Sixth Form will be happy to help provide you with further information.

Yours

Mlock

Headteacher



Contents

- 1. Meet the Sixth Form Team
- 2-3. Facilities and Resources
- 4. Introduction to Programme Routes
- 5-6. Sixth Form Progression Routes
- 7-8. Animal Care
- 9-10. Care
- 11-12. Developing Aspirations for Life
- 13-14. Construction
- 15-16. Hairdressing
- 17. Meet the Teachers
- 18. Meet the Vocational Tutors
- 19-20. Horticulture
- 21-22. Hospitality and Catering
- 23-24. Developing Independence for Work
- 25-26. Motor Vehicle
- 27-28. Retail
- 29-30. Ready for Work
- 31. Who says we're outstanding
- 32-33. Success Stories
- 34. Careers, Education and Guidance
- 35. Admissions
- 36. Enrichment Opportunities

Meet the Sixth Form Team



Roxanne Burness-Moakes

Head of Sixth Form

rmoakes@combepafford.torbay.sch.uk



Kirsty Mills

Sixth Form Manager/Exams Manager/Pastoral Support

kmills@combepafford.torbay.sch.uk



Abi Sainsbury

Sixth Form Administrator

asainsbury@combepafford.torbay.sch.uk



Steph Morgan

Careers Adviser/ Employer Engagement

smorgan@combepafford.torbay.sch.uk

Our Facilities and Resources

15 Years in the making!



A summary of our journey so far

For the past fifteen years, we have been developing state-of-the-art vocational facilities to provide realistic working environments for pupils to work in as part of a wider, work-based curriculum. The first facility to be completed was our Motor Vehicle workshop, followed by our Construction Skills building, and more recently the Yellow Frog Café, Horticulture greenhouse and our purpose built hairdressing salon! Our most recent addition is The Ark, our new animal care facility.

Originally, these facilities were developed to provide vocational courses for our Key Stage 4 pupils for them to choose as part of the Year 9 options process. At the same time we were able to offer these courses to pupils from other schools and units, and these courses soon grew in popularity. Now these wonderful facilities provide an inspirational learning base for Sixth Form students on their specialist vocational pathways.

Hairdressing Salon

Our state-of-the-art, glass fronted hairdressing salon, complete with modern reception area, 5 wash basins and 10 styling stations is now fully open and up-and-running!



The Ark

The Ark is our dedicated space for animal care, including brand new enclosures for our small mammals, an exercise area for our hens, a guinea pig village and a wooden work hut for students to work in when it rains.



Motor Vehicle Workshop

Our modern, well-equipped workshop includes three ramps, a tyre-fitting bay with tyre changers and wheel balancers, and a compressed air supply to operate air guns and other tools. In addition, there are portable tool trolleys plus trolley jacks and axle stands, a teaching area with engine stands, and a small changing room and wash area.



The Pea Pod

Our horticulture base consists of a very generously sized heated greenhouse, complete with new tools and equipment. The school has also purchased a number of lawnmowers and strimmers that the students are now trained to use, and other equipment such as composting bins.



Construction Facilities

We have a varied provision for construction including a painting and decorating workshop, an outdoor enclosed bricklaying area with container, and facilities for plumbing. In addition, students have use of the school grounds for putting their skills into practice.



Yellow Frog Café

Our purpose built Yellow Frog Café is proving to be an extremely popular and versatile facility with students, staff and visitors alike. Comprising a fully-equipped commercial training kitchen, with serving hatches, barista coffee equipment and practical teaching area.



Core Subjects

All students will continue to follow a core academic curriculum that runs alongside their specialist, work-related timetable. This consists of the following subjects, which are given an appropriate amount of curriculum time over the course of two days:

English*; Maths*; ICT; Personal Social and Health Education, and Physical Health and Wellbeing.

- **The Developing Independence for Work and Work Ready students will also follow Employability lessons.**
- **The Developing Aspirations for Life students will have additional lessons in Communication and Life Skills.**

Work-based Curriculum

Work ready students will attend an approved work placement 2 days per week and be supported in their placement as appropriate by a nominated Job Coach. Students are expected, where possible, to travel independently to their work placement and attend school three days a week.

Developing Independence for Work students will attend a sheltered placement one day a week, in a group of 4, supported by a nominated Job Coach. The second day will be a Work Skills based curriculum taught in school, which will focus on topics such as Health and Safety in the workplace and working towards independent travel.

Developing Aspirations for Life students have an alternative work-based curriculum consisting of a day of Work Skills and a day of Life Skills, some of which takes place off-site in structured work situations with staff support. Students attend school five days a week.

Choice of Vocational Pathway

All students, whether they are attending a work placement, or are working towards being work-ready and are in school 5 days a week, have to choose a vocational pathway to follow on Fridays. The list of pathways to choose from is as follows:

**Animal Care
Care
Construction**

**Hairdressing
Horticulture
Hospitality & Catering**

**Motor Vehicle
Retail**

For a small number of students, who do not easily fit into one of the vocational pathways, there are some other options that can be considered; for example working in a local charity shop.

*Government regulations pertaining to Maths and English stipulate that if a student has achieved either a GCSE Grade 4 or above, OR a Level 2 Functional Skills Award, there is no requirement to continue with Maths and English. If the previous pass was a GCSE Grade 3 there is at present a DfE requirement that a course in GCSE must be followed to give the student the opportunity to achieve a GCSE Grade 4. Students who achieved a GCSE Grade 2 or below in either subject are required to follow a course leading to a Functional Skills qualification at an appropriate level

Sixth Form

Programme Route

Academic
2 Days/week

Ready for Work

**Maths, English IT,
Employability,
PSHE and Fitness**

**Developing
Independence
for Work**

**Maths, English,
IT, Employability,
PSHE and Fitness**

**Developing
Aspirations for
Life**

**Maths, English, IT,
Getting Ready for
Work,
Communication,**

Route Map

Work-related

2 Days/week

Vocational

2 Days/week

**Independent Work
Placement
(monitored by a
Job coach)**

Students choose from the
following list:
Animal Care, Care,
Construction, Hairdressing,
Horticulture, Hospitality &
Catering, Motor Vehicle or
Retail

**Sheltered Work
Placement
(Supported)**

Students choose from the
following list:
Animal Care, Care,
Construction, Hairdressing,
Horticulture, Hospitality &
Catering, Motor Vehicle or
Retail

**Independent
Living Skills and
Enterprise Projects**

A Programme based
around Hospitality &
Catering, Hairdressing
and Animal Care



Level 1/2 Animal Care Pathway

**Delivered by
an experienced
Animal Care tutor**

This pathway has been designed for 16-19 learners with an interest in working with animals. Students will work with a range of animals from pets and small mammals like guinea pigs and rabbits, to reptiles, fish and exotic species. The practical nature of the course offers the ideal preparation for an apprenticeship, supported or full employment, and volunteer work in this sector. Personal Protective Equipment (PPE) is provided.

Is it for me?

If you like the idea of working with animals and caring for them, then this pathway could be just what you are looking for. You will need to be calm, patient and well organised. You will also need to be responsible and have a love of animals. You will also need an up-to-date tetanus jab.

What will I be learning?

You will be learning about the dietary and accommodation needs of the animals in your care, and ensuring that they are safe and well. You will develop the skills and confidence necessary to succeed, whether it be grooming the animals or handling them safely and appropriately.

How will I learn and be assessed?

The learning will be very hands-on and will take place mostly on-site using our own animals and our own specialist animal care facilities in The Ark and the Reptile House. You will be assessed on your practical skills and keep a portfolio of evidence on each unit you undertake.

How will I be supported?

Groups are small and pupils are supported by a specialist tutor and sometimes a Learning Support Assistant as well. On work placements, all pupils are supported by a specially trained Job Coach. Additional support is provided by workplace supervisors, plus the advice of a Careers Adviser.

What qualification will I gain?

This is a module-based course which allows students to build up credits towards the most appropriate qualification - we offer ABC Level 1 Award and Certificate in Practical Small Animal Care Skills assessment is done through a combination of practical work and a portfolio to show both key skills and vital knowledge.

What can I do afterwards?

If successful, you will be encouraged to apply for a suitable apprenticeship or part-time or full-time paid employment in an Animal Care setting. Staff can help with this transition. Alternatively, you can be helped into voluntary work in this sector.

You will be embarking on a practical learning journey that involves you working 'hands-on' with a wide variety of animals with different characteristics and needs.

The focus will be on developing confidence in the key skills of handling, grooming and caring for animals.

Students will in the first instance work on site caring for our own animal stock in The Ark and the Yellow Frog Cafe, but there will also be opportunities to visit and work in other local Animal Care settings.

This is an exciting opportunity for anyone who has an appreciation of animal life and its diversity, and who is keen to work in this area. It could well lead to volunteer work, paid work or even an apprenticeship for the successful student.



What the students say

'I feel very comfortable in the Sixth Form and enjoy the lessons, and working in a dog grooming parlour is great because it is giving me the experience and the skills I need for the future'.

– Kiemera Clarke

Linked Employers



and other local employers

Course Details & Further Information

Title: Level 1 Certificate in Small Animal Care Studies

Duration: 1-2 Years

For an application form and further details, please contact Steph Morgan:

smorgan@combepafford.torbay.sch.uk

or call 01803 321807



Level 1 Care Pathway

Delivered by an experienced
Health and Social Care teacher

This pathway has been designed for 16 - 19 learners with an interest in working in the care industry, including infants and pre-school children, older persons and other adult groups. The practical nature of the course is an ideal preparation for an apprenticeship, supported or full employment, and volunteer work in this sector.

What
will I

Is it for me?

If you like the idea of working with young children, supporting adults or older persons, and you have a caring and friendly personality, then this pathway could be just what you are looking for. You will also need to be responsible, and have a good awareness of health and safety.

What will I be learning?

You will be learning about the characteristics and needs of different client groups, from infants and pre-school children to vulnerable adults and older persons. You will experience caring for and helping children and adults with their everyday needs, and will begin to develop the skills needed to work in this sector.

How will I learn and be assessed?

Much of the learning will be of a practical nature and take place in a suitable work-based environment such as a pre-school, nursery or adult social care setting. You will be assessed on practical skills and competencies and demonstrate your knowledge on each unit by means of a portfolio of evidence.

How will I be supported?

Groups are small and pupils are supported by a specialist tutor and sometimes a Learning Support Assistant as well. On work placements, all pupils are supported by a specially trained Job Coach. Additional support is provided by workplace supervisors, plus the advice of a Careers Adviser.

What qualification will I gain?

Pupils will work towards a Level 1 qualification in Child Care alongside a Level 1 qualification in Adult Social Care delivered over a two year course, alongside the practical hands-on experiences you will have the opportunity to undertake in a placement to consolidate your learning.

What can I do afterwards?

If successful, you will be encouraged to apply for a suitable apprenticeship or part-time or full-time paid employment in local nurseries, adult social care settings or similar establishments. Staff can help with this transition. Alternatively, you can be helped into voluntary work in this sector.

You will be embarking on a learning journey into the care sector providing opportunities to experience first-hand through suitable work placements what it is like to work in local play groups, nurseries and pre-schools.

Alongside the practical elements of the course, classroom learning will supplement and consolidate your learning by focusing on the characteristics and individual care needs of children at different stages of their development, supporting adults and caring for adults in social care.

We have an ongoing working partnership with a number of nurseries/preschools. This affords opportunities for our students to work with their children both on our premises and off-site as well. This is already proving to be a very popular feature.

What the students say

'I love the knowledge that the care course gives me, it is giving me a chance to be in a position to help other people, which is something I've always wanted to do'.

– Charlotte Bullock

Linked Employers



Whiterock Pre-School and other local nurseries



Course Details & Further Information

Title: Level 1 Award in Childcare

Level 1 Award in Introduction to Working with Adults in Social Care

Duration: 1-2 Years

For an application form and further details, please contact Steph Morgan:

smorgan@combepafford.torbay.sch.uk

or call 01803 321807

Developing Aspirations for Life

This route aims to develop the aspirations of students in order to support them to make informed choices in their adult life. The students following this route are not yet able to access a full day of vocational learning and therefore will focus on their skills of independence, alongside their core studies, whilst being offered a variety of life experiences to support their choices for the future.



This route intends:

- To improve the level students achieve in English, Mathematics and IT
- To support students in gaining self-confidence and to build self-esteem
- To help students to identify their strengths and areas of development
- To allow students to explore a variety of life experiences
- To develop independent living skills



Developing Aspirations for Life

Impact on students:

The students following this route will develop their skills of independence whilst also gaining experience of the world around them. Through these experiences they will gain more of an understanding of where their interests lie and the path they may wish to take in the future.

Students will continue to progress in their core studies and gain qualifications to support their aspirations as they work towards a vocational interest. Students will be more aware of how to look after their health both physically and mentally and also improve their understanding of how to complete everyday tasks to promote their independence.

Curriculum Implementation:

Within this route, students will receive two days of core learning which involves the teaching of English, Mathematics, IT and PSHE. The English and Mathematics curriculum both work towards a Functional Skills qualification and are taught three times a week. The IT curriculum is focused on skills that will support students in the modern world. The PSHE curriculum aims to provide students with a deeper understanding of their health and well-being, including their mental and physical health.

Students will access Independent Living Skills for one day of the week, where they will learn about preparation for adult life. This will involve learning about personal safety, home living and cooking meals. On a second day, students will be involved in a variety of community projects, supporting charities, experiencing working life and learning new skills.

On the remaining day, students will have the option to follow a vocational pathway in Animal Care, Construction, Horticulture, Hospitality and Catering or Motor Vehicle. Alternatively, there is an opportunity that students might access a day of alternative provision from an external provider.





Level 1

Construction Pathway

Delivered by an
experienced and
qualified tutor from the
building trade

This pathway has been designed for 16-19 learners with an interest in working in practical construction trades such as carpentry, bricklaying, plumbing and painting and decorating. Much of the work will take place in our specialist construction centered workshops, but there will also be the opportunity to do some real 'hands-on' tasks outside around the school site. The practical nature of the course offers the ideal preparation for an apprenticeship, supported or full employment, and volunteer work in this sector. PPE is of course provided.

Is it for me?

If you like working with a range of tools, equipment and materials, and you are hardworking and have good practical skills, then this pathway could be just what you are looking for. You will also need to be responsible, and have a good awareness of health and safety.

What will I be learning?

You will be learning the basics of the building trade, and putting these skills into action in a wide variety of contexts from building a block wall to putting in a cold water supply to painting internal walls to hanging a door. There will also be real tasks to complete around the school site and the opportunity to gain a City & Guild qualification in Construction Skills.

How will I learn and be assessed?

The work will be heavily practical and take place in our specialist construction facilities, including the painting and decorating workshop and outdoor bricklaying area, although opportunities exist to work outside. You will be assessed on practical skills and demonstrate your knowledge on each unit via a portfolio of evidence.

How will I be supported?

Groups are small and pupils are supported by specialist tutors and sometimes a Learning Support Assistant as well. On work placements, all pupils are supported by a specially trained Job Coach. Additional support is provided by workplace supervisors, plus the advice of a Careers Adviser.

What qualification will I gain?

This is a module-based course which allows students to build up credits towards the final qualification, through a combination of practical work and underpinning knowledge. The qualification will be a Level 1 City & Guilds Award or a Certificate in Construction skills.

What can I do afterwards?

If successful, you will be encouraged to apply for a suitable apprenticeship or part-time or full-time paid employment with general builders or buildings maintenance companies. Staff can help with this transition. Alternatively, you can be helped into voluntary work in this sector. City and Guilds is a well-recognised awarding body throughout the industry.

You will embark on a learning journey into the construction trades that will give students a very practical, hands-on experience, preparing them for labouring and general buildings maintenance. At the heart of this journey will be the development of key practical skills.

There will be opportunities for students to work in a range of locations including the construction workshops, the school grounds and premises, with building companies such as Morgan Sindall and Cavanna Homes, and even landscaping contractors.

This is an exciting opportunity for anyone who works well with tools, equipment and materials, and could lead to casual work on a building site as a labourer or alternatively an apprenticeship with a local building company.

What the students say

'It is great to work on a real building site with experienced guys who really know what they are doing. They have trusted me to paint walls and cupboards in new houses, and I absolutely love it!'

- Tom Houghton



Course Details & Further Information

Title: Level 1 Certificate

Level 1 Extended Diploma
in Basic Construction Skills

Duration: 1-2 Years

For an application form and further details,
please contact Steph Morgan:

smorgan@combepafford.torbay.sch.uk

or call 01803 321802

Linked Employers



and other local builders



Level 1 Hairdressing Pathway

Delivered by a qualified and experienced tutor.

This pathway has been designed for 16-19 learners with an interest in working in the Hair and Beauty sector in jobs involving washing, cutting and styling hair. Students will work with head blocks, other students, and also suitable adults that are available to build their confidence at working on a variety of hair styles. The practical nature of the course offers the ideal preparation for an apprenticeship or for a college course in hairdressing at an appropriate level.

Is it for me?

If you like dealing with people and enjoy working with hair, then this pathway could be just what you are looking for. You will need to be hardworking, confident and have a good awareness of health and safety. You will also need to be prepared to develop your customer service skills.

What will I be learning?

You will be learning how to wash, style and dry people's hair. You will develop the skills and confidence necessary to succeed, whether it be talking to customers about their hair, putting their wishes into practice, or advising customers about hair products.

How will I learn and be assessed?

The learning will be very hands-on and will take place on-site in our purpose-built hair salon, using head blocks and real subjects to practice on. You will be assessed on your practical skills and keep a portfolio of evidence on each unit you undertake.

How will I be supported?

Groups are small and students are supported by a specialist tutor and sometimes a Learning Support Assistant as well. On work placements, students are supported by a specially trained Job Coach. Advice is provided by a Careers Adviser.

What qualification will I gain?

This is a module-based course which allows students to build up credits towards the final qualification, a City and Guilds Level 1 Certificate in Hairdressing Skills. Assessment is done through a combination of practical work and portfolio to evidence both skills and underpinning knowledge.

What can I do afterwards?

If successful, you will be encouraged to apply for a suitable apprenticeship in a hair salon or to apply to college for a course at an appropriate level. Staff can help with this transition. Alternatively, you can seek work by finding clients as a mobile hairdresser.

You will be embarking on a practical learning journey that involves you working in a real hair salon. The focus will be on developing confidence and skill in dealing with clients and doing their hair to their satisfaction.

Students will in the first instance work on head blocks, then on other students, and finally with adults, performing simple skills such as washing and blow drying, then learning to style hair in a variety of ways according to the client's wishes. There may also be the opportunity to work alongside another hairdresser working with personal clients.

This is an exciting opportunity for anyone who enjoys working with hair and has an appreciation of different hairstyles and presentation. It could well lead to paid work, an apprenticeship or a college course at an appropriate level.

What the students say

“It’s friendly and welcoming in the Sixth Form and I’ve received good support in hairdressing. Now I have the confidence to apply to college.”

- Lily Rodaway



Course Details & Further Information

Title: Level 1 Certificate in Practical Hairdressing Skills

Duration: 1-2 Years

For an application form and further details, please contact Steph Morgan:

smorgan@combepafford.torbay.sch.uk

or call 01803 321802

Meet the Teachers



Tamsin Moor

**Maths/English/PSHE/
Communication/D of E**



John Spooner

Head of Vocational



Anthony Waring

Construction



Alison Keay

English/PSHE



Rosemary Dolan

Maths/English/PSHE/Student Voice

Meet the Vocational Team



Wayne Stamenkovic
Construction Tutor



Arthur Hawksworth
Hospitality & Catering Tutor



Paul Grainger
Motor Vehicle Tutor



Amanda Bellamy
Retail and Care Tutor



John Spooner
Head of Vocational



Nadine Broadway
Animal Care Tutor



Emma Newson
Hairdressing Tutor



Tamsin Moor
Horticulture Tutor



Level 1

Horticulture Pathway

Delivered by an
experienced
and qualified
Horticulture tutor

This pathway has been designed for 16-19 learners with an interest in working in the horticultural trades such as gardening, landscaping, grounds maintenance and countryside management. Students will work with a variety of tools and equipment (including mowers and strimmers) to keep gardens tidy and pleasing to the eye. The practical nature of the course offers the ideal preparation for an apprenticeship, supported or full employment, and volunteer work in this sector. PPE is provided.

Is it for me?

If you like being outdoors and enjoy working on the land, then this pathway could be just what you are looking for. You will need to be hardworking, confident and have a good awareness of health and safety. You will also need to be responsible and have an up-to-date tetanus jab.

How will I learn and be assessed?

This is a practical course which will take place mostly on-site using our greenhouse, horticulture area and the school grounds, although some learning will be undertaken outside in our community. You will be assessed on your practical skills and keep a portfolio of evidence on each unit you undertake.

What qualification will I gain?

This is a module-based course allowing students to build up credits towards either a City and Guilds Level 1 Certificate or Diploma in Practical Horticulture Skills. Assessment is via a combination of practical work and a portfolio to show both key skills and vital knowledge.

What will I be learning?

You will be learning how to work the land using a range of tools, equipment and machinery whilst learning about growing plants. You will develop the skills and confidence necessary to succeed, whether it be digging, mulching, weeding, sowing seeds, mowing or strimming.

How will I be supported?

Groups are small and pupils are supported by a specialist tutor and sometimes a Learning Support Assistant as well. On work placements, all pupils are supported by a specially trained Job Coach. Additional support is provided by workplace supervisors, plus the advice of a Careers Adviser.

What can I do afterwards?

If successful, you will be encouraged to apply for a suitable apprenticeship or part-time or full-time paid employment with either a garden centre, gardener, landscape gardener or local council. Staff can help with this transition. Alternatively, you can be helped into voluntary work in this sector.

You will be embarking on a practical learning journey that involves you working on the land for cultivation, landscaping or grounds maintenance purposes. The focus will be on developing confidence and skill in using a variety of tools, equipment and machinery.

Students will in the first instance work on site, either maintaining the school grounds or growing and tending plants in and out of the school greenhouse, but there will also be opportunities to visit and work in local garden centres and parks and with local gardeners.

This is an exciting opportunity for anyone who has an appreciation of plants, trees and the land and who enjoys working with machinery. It could well lead to volunteer work, paid work or even an apprenticeship for the successful student.

What the students say

"The horticulture pathway has been a great experience for me, and I have enjoyed the teamwork. I have also enjoyed bringing this experience into my work placement at Rowcroft Hospice and applying it in the real world."

– Callum Taylor-Pratt

Course Sponsors



and other local employers



Course Details & Further Information

Title: Level 1 Certificate/Diploma in Practical Horticulture Skills

Duration: 1-2 Years

For an application form and further details, please contact Steph Morgan:

smorgan@combepafford.torbay.sch.uk

or call 01803 321802



Level 1 Hospitality & Catering Pathway

Delivered by an
experienced chef in
the Yellow Frog Cafe

This pathway has been designed for 16 - 19 learners with an interest in working in the hospitality and catering industry, including cafés, restaurants, guest houses and hotels. The practical nature of the course offers the ideal preparation for an apprenticeship, supported or full employment, and volunteer work in this sector. PPE is provided.

Is it for me?

If you like the idea of working in a kitchen preparing, cooking and serving food to customers, and you are hardworking and well organised, then this pathway could be just what you are looking for. You will also need to be responsible, and have a good awareness of health and safety.

What will I be learning?

You will be very hands-on and learn a wide range of skills including food preparation and cooking to produce a range of dishes, laying tables, serving and barista skills. You will also develop counter, till and customer service skills, as well as learning about food storage, food hygiene and healthy eating.

How will I learn and be assessed?

The learning will be work-based and take place in the kitchen of our purpose-built working café, the Yellow Frog, where you will be part of a team supplying daily meals to visitors, staff and students. You will be assessed on your practical skills and keep a portfolio of evidence on each unit you undertake.

How will I be supported?

Groups are small and pupils are supported by a specialist tutor and sometimes a Learning Support Assistant as well. On work placements, all pupils are supported by a specially trained Job Coach. Additional support is provided by workplace supervisors, plus the advice of a Careers Adviser.

What qualification will I gain?

You will probably be working towards achieving a Level 1 Certificate or similar qualification. Success in achieving this qualification will help set you on the right path for a job in the hospitality trade, and will help prepare you for any training you may undertake in future when you secure a job.

What can I do afterwards?

If successful, you will be encouraged to apply for a suitable apprenticeship or part-time or full-time paid employment in a café, restaurant, hotel or similar establishments. Staff can help with this transition. Alternatively, you can be helped into voluntary work in this sector.

You will embark on a learning journey into the hospitality and catering sector, that will provide a wide range of learning opportunities to experience first hand, such as working in our very own Yellow Frog café and its spacious commercial kitchen.

Students will undertake the full range of catering roles, including preparing food, cooking and baking, preparing hot meals, snacks, desserts and drinks to be served to customers in the café, taking orders, serving and clearing, washing up and handling the till. This is an exciting opportunity which is guaranteed to be very hands-on, lots of hard work but also lots of fun. Students will learn to work more independently and build confidence for dealing with customers.

We work closely with local employers to give students real experience of the hospitality and catering industry.

What the students say

"Sixth Form has been amazing, very supportive and the pastoral support has been very good. I love my work placements and feel positive about my chances of getting an apprenticeship"

- Ben Collins

Course Sponsors



Course Details & Further Information

Title: Level 1 Certificate in Skills for Working in Catering and Hospitality

Duration: 1-2 Years

For an application form and further details, please contact Steph Morgan:

smorgan@combepafford.torbay.sch.uk

or call **01803 321802**

Developing Independence for Work

This route aims to develop the independence of students as they gain confidence on their journey towards working life. The students following this route have demonstrated that they are ready to experience work opportunities in a supportive environment, alongside their core studies and chosen vocational pathway. Whilst the aim is to develop independence for work, this route also supports the skills needed towards achieving independent living and independent travel.



This route intends:

- To improve the level students achieve in English, Mathematics and IT
- To support students in gaining self-confidence and to build self-esteem
- To help students to identify their strengths and areas of development
- To allow students to explore a variety of career opportunities with varying degrees of support
- To encourage independence both within the workplace and in the wider world



Developing Independence for Work

Impact on students:

The students following this route will have an improved knowledge of the workplace and have developed the skills to support their journey towards future employment. They will recognise their strengths and areas for development by being reflective learners and have an understanding of how to seek support when required. Students will have improved their confidence across their academic and working environment, as they work towards obtaining academic and vocational qualifications. Through experiencing a variety of opportunities centred around the workplace, the students will gain a better understanding of the employment sectors and how these may fit within their future. Students will develop their independence and demonstrate this as they progress through the programme towards an independent work placement.

Curriculum Implementation:

Within this route, students will receive two days of core learning, which involves the teaching of English, Mathematics, PSHE, IT and Employability. The English and Mathematics curriculum both work towards a Functional Skills qualification and are taught three times a week; for students working at a higher level, a GCSE curriculum is offered. The IT curriculum is focused on skills that will support them in the modern world. The Employability curriculum aims to deliver the necessary skills and knowledge to support students in their journey towards employment. The PSHE curriculum aims to provide students with a deeper understanding of their health and well-being, including their mental and physical health.

Students will access their vocational pathway for one day a week, where they will develop their skills through a variety of learning activities. The pathways are Animal Care, Care, Construction, Hairdressing, Horticulture, Hospitality and Catering, Motor Vehicle, Painting and Decorating and Retail.

The remaining two days will be centred around sheltered work placements and work skills, where the students will be supported to develop their resilience and confidence. One of these days will be offsite working with an employer in a small group, with the support of a job coach. Students will work towards an independent placement, within a local trusted partnership, where they can continue to develop their independence.





Level 2

Motor Vehicle Pathway

Delivered by experienced
and qualified Motor
Vehicle Technicians

This pathway has been designed for 16-19 learners with an interest in working in the automotive industry, whether it be in a garage, repair workshop or tyre and exhaust fitters. The practical nature of the course offers the ideal preparation for an apprenticeship, supported or full employment, and volunteer work in this sector. PPE is provided.

Is it for me?

If you like the idea of working with cars and learning about the maintenance of motor vehicles, and you have a mechanical mind and are good with your hands, then this pathway could be just what you are looking for. You will also need to be responsible and have a good awareness of health and safety.

What will I be learning?

You will be learning about health and safety in the workshop, tools and equipment, wheels and tyres, plus engineering and tool making. There are also specific modules on MET (Mechanical electrical and trim), exhaust systems and petrol engines. After this you will progress on to other areas such as braking systems, steering and suspension, electrical and electric vehicle awareness. You will experience what it feels like to work in a real garage.

How will I learn and be assessed?

The theory and the practical work will be taught alongside each other in our purpose-built motor vehicle workshop where you will work on a range of vehicles. You will be assessed on practical skills and theoretical knowledge by means of a portfolio of evidence and both written and online tests at the end of each unit.

How will I be supported?

Groups are small and pupils are supported by a specialist tutor and sometimes a Learning Support Assistant as well. On work placements, all pupils are supported by a specially trained Job Coach. Additional support is provided by National Tyres staff and our Careers Adviser.

What qualification will I gain?

Depending on ability, you will follow the IMI Level 2 Certificate in Vehicle Component Fitting which is recognised by the motor industry. Success in achieving this will set you on the right path for further learning, apprenticeship, or a job in the industry. This will and prepare you for the future when you secure a job.

What can I do afterwards?

You will be encouraged to apply for a suitable apprenticeship or part-time/full-time paid employment in a garage or tyre and exhaust fitting centre. As soon as you are competent and confident, you will have the opportunity to apply for paid casual employment alongside studies.

This pathway provides a highly practical, hands-on journey into the fast-fit tyres and exhausts industry, delivered by our qualified mechanic in a purpose-built motor vehicle workshop. Alongside this, you will undertake theory sessions to underpin your learning.

The aim of the course is to identify and develop potential tyre and exhaust fitters who can gain long-term employment, and to this end we have recently entered into partnership with National Tyres with whom we envisage there will be additional opportunities for our learners to develop their skills and experience.

You have the opportunity to be trained up in a specific area within motor vehicle maintenance that gives you the best possible chance of securing an apprenticeship or the appropriate employment.

What the students say

'It's been great being in the 6th Form – it has improved my confidence to obtain a job. I wouldn't be where I am today if it weren't for the 6th Form'

- Kelley Behan



Course Sponsors



TOTNES & SOUTH HAMS
TYRE SERVICES

Course Details & Further Information

Title: IMI Level 2 Certificate in Vehicle Component Fitting

Duration: 1-2 Years

For an application form and further details, please contact Steph Morgan:

smorgan@combepafford.torbay.sch.uk

or call 01803 321802



Level 1 Retail Pathway

This is delivered by an experienced Retail Studies tutor in partnership with local Sainsbury's stores

This sixth form pathway has been designed for students with an interest in working in the retail sector, for example: shops, stores, supermarkets and other retail outlets. The practical nature of the course offers the ideal preparation for an apprenticeship, supported or full employment, and volunteer work in this sector. Uniform is provided.

Is it for me?

This is an exciting opportunity for anyone who enjoys working as part of a team, meeting people and taking on a new challenge. If you are approachable, take a pride in your appearance and have good money handling skills, then this pathway could be just what you are looking for. You will also need to be responsible, hardworking and have a good awareness of health and safety.

How will I learn and be assessed?

Much of the learning will be work-based and will take place in a local Sainsbury's store, or other retail outlet. You will undergo a thorough induction, as well as being assessed on practical skills and competencies in the workplace. You will also demonstrate your knowledge on each unit by producing a portfolio of evidence.

What qualification will I gain?

You will work towards achieving a Level 1 Certificate in Retail Skills accredited by the City and Guilds awarding body. Success in achieving this qualification will help to set you on the right path for a job in retail and will help to prepare you for any training that you may undertake in future when you secure a job.

What will I be learning?

This qualification will help you to learn, develop and practise a full range of retail processes, experiencing what it is like to be working on the shop floor. You will receive a full induction and on-the-job training and support in areas such as: teamwork, processing payments, customer service, stock control, high risk food safety and general safe working practices.

How will I be supported?

Groups are small and whilst on work placements, you will be supported by your retail tutor, along with Sainsbury's staff and trainers. On your pathway day you will be supported by a specialist tutor. You are also encouraged to seek the advice of a careers adviser.

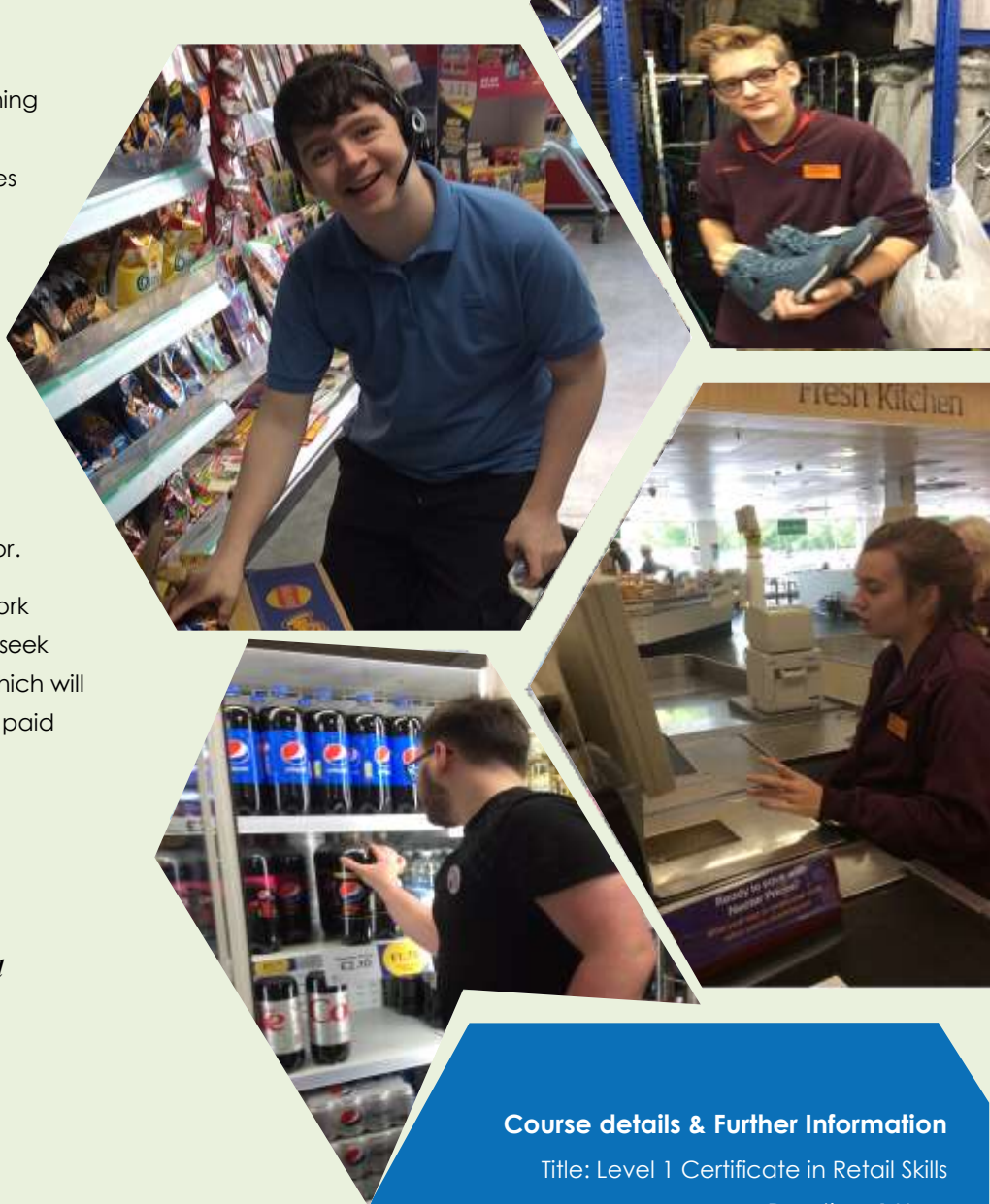
What can I do afterwards?

As soon as you are competent and confident with the qualification, you may have the opportunity to apply for paid casual employment alongside your course. On completion, and if successful, you will be encouraged to apply for a suitable apprenticeship or part-time/full-time paid employment in a retail.

You will be embarking on a practical learning journey that gives you access to a highly successful training package that combines in-store training by Sainsbury's at one of their local stores, alongside classroom learning to supplement and consolidate your learning.

There will be opportunities to experience working in-store with real customers on the shop floor, including at the point of sale on the checkouts with the support of both Sainsbury's staff and your Retail Tutor.

For those who demonstrate the ability to work independently, we will encourage you to seek paid casual work over holiday periods which will improve your chances of securing full-time paid employment when you leave.



What the students say

'Working in Sainsbury's has been a good experience for me, and as a result I have been offered paid work at Christmas'

- Amy Weston

Course sponsors

Sainsbury's
and other local retail outlets



Course details & Further Information

Title: Level 1 Certificate in Retail Skills

Duration: 1 Year

For an application form and further details

Please contact Steph Morgan:

smorgan@combepafford.torbay.sch.uk

or call 01803 321802

Ready for Work

The principal aim of the Ready for Work route is to give students who have demonstrated their potential for work the opportunity to further develop their work skills in an appropriate work placement, alongside their core studies and their chosen vocational pathway. This route is aimed at students who have aspirations to obtain paid employment or an apprenticeship on leaving the Sixth Form, and it is expected that these students will already be able to, or be committed to travelling independently to and from the sixth form and their place of work. This route is geared towards helping students improve their academic and vocational qualifications whilst building up their skills and experience in the workplace so that they are in a strong position to apply for jobs and apprenticeships.

This route intends:

- To improve the level students achieve in Maths, English and IT
- To enable students to gain the highest qualification possible in their chosen vocational pathway
- To support students to successfully build up their skills and experience in the workplace
- To develop students' resilience and confidence to succeed in the world of work
- To encourage and provide opportunities for developing a healthy, active lifestyle
- To provide opportunities for personal growth and development
- To support students to travel independently to and from the sixth form/their work placements
- To enable students to develop the ability to maintain their physical health and mental well being
- To support students in their search for paid employment and/or apprenticeships



Ready for Work



The impact for students:

Students will develop carefully thought out and achievable aspirations for the future, and will be successful in obtaining part-time and/or holiday employment whilst they are in the sixth form. When the time comes to leave the sixth form, students will be well-equipped to compete for jobs and apprenticeship vacancies, and will be successful in obtaining permanent paid employment or an apprenticeship, or if appropriate, move onto an appropriate course at a local college of further education. The intention is that Ready for Work students will leave as independent, mature and well-rounded individuals with a positive outlook, who possess the confidence and resilience necessary to be successful in life.

Who says we are OUTSTANDING?

OFSTED do!

In November 2018 OFSTED said

"The Sixth Form was judged to be outstanding at a previous inspection"

This was the second time the Sixth Form has been praised by OFSTED since opening its doors!

They were so impressed with the Sixth Form, they mentioned us not once...

"This provision continues to be a significant strength and a highly effective aspect of the school's work. The head of sixth form and his team are passionate about the quality of education that students receive."

Not twice...

"Relationships with a wide range of employers is striking. This enables students to receive valuable work experiences in their line of work. As a result, students are highly successful in gaining paid employment in areas such as construction, horticulture, hospitality and retail."

But three times!

"Students have high aspirations for their own futures and want to do well. This is exemplified in the impressive number of students gaining paid employment in their chosen careers, which well above the national average of people with learning difficulties."



Success Stories



Tom Houghton



Tom spent two years on our Construction pathway whilst working on a building site with Cavanna Homes building up his experience. He then went to work with MBS Construction and secured an apprenticeship with them on leaving school, having quickly gained a strong reputation. Tom was also one of three students who climbed the Three Peaks in 2019 in aid of Rowcroft Hospice.



Natasha Mildren



Natasha always wanted to study child care and there was never any doubt that she would follow the Care pathway in the Sixth Form. Over the next two years, she proved herself to be one of our very strongest students at work placement, building up several hundred hours of experience working with nursery age children at Southernwood Nursery. She regularly received glowing feedback from her employer and was confident enough to devise her own games for children and take small groups herself. Natasha has gone on to South Devon College to further her studies and further build her confidence.



Ben Waymouth



Ben joined the Retail pathway in the Sixth Form and excelled at both the underpinning coursework and the practical side in-store serving customers on the till. Ben made such a good impression that he picked up some casual paid work in Sainsbury's at Christmas time. For his second year in the Sixth Form he worked at Fermoy's Garden Centre where he made an equally favourable impression, resulting in him being offered a part-time contract when he left school. In the meantime, Ben successfully applied to Project Aspire at Torbay Hospital and is currently juggling his work commitments with his internship at the hospital.



Kelley Behan



Kelley joined us from Torquay Academy and went straight onto the Motor Vehicle pathway, working at two different branches of National Tyres. Kelley then built up further experience at TTS Tyres in Totnes before being offered an apprenticeship by ATS Euromaster having completed three years in the Sixth Form. He is also the first student to achieve the IMI Level 2 Diploma in Vehicle Fitting Principles.

Success Stories



Joe Francis



Joe was working alongside our Horticulture apprentice and following the Horticulture pathway when we introduced him to the grounds maintenance team at SWISCO as a trial. Joe absolutely loved it and the trial soon turned into a permanent work placement. Joe very quickly became indispensable to SWISCO's work and soon he was spending less time in school and more time at work, including volunteering in the school holidays. He was finally rewarded for all his hard work just after he left the Sixth Form with a permanent full-time contract – a brilliant result all round and just reward for his reliability and determination.



Morgan Quin



Right from the outset, Morgan was highly motivated to work in the Hospitality and Catering sector, specifically working on the food preparation side of things. He excelled working in the Yellow Frog Café on Fridays, and for his work placement was placed with the catering team of Ocean Leisure in Exmouth, immediately making a very favourable impression. Soon he was being offered paid work at weekends alongside his work placement days, and after two years of hard work during which time he built up several hundred hours of kitchen experience, he was offered full-time hours on leaving the Sixth Form.



Amy Weston



Amy joined the Sixth Form on the Retail pathway and immediately showed how good her customer skills were. She excelled at Sainsbury's but failed to pick up a job there in the aftermath of the pandemic. She applied for Project Aspire at Torbay Hospital, was accepted, and really enjoyed working in three different departments, her favourite being the Louisa Cary children's ward. Amy then applied for a number of jobs at the hospital before her patience and persistence finally paid off and she was rewarded with a full-time receptionist position in the outpatients department. This was hugely deserved!



Ben Barker



Ben was undecided about his career direction for a long time, having a go at several pathways including Motor Vehicle, Construction and Horticulture before deciding he liked the idea of becoming an HGV driver. He had the chance of a trial for an apprenticeship with a large pallet company in Exeter but turned this down in favour of becoming a bus driver. Having identified this new goal, he quickly passed his driving test and soon after applied to Stagecoach Bus Company for their driver programme. Ben passed all the selection stages with flying colours to become one of the youngest bus drivers in Devon.

Careers Advice and Guidance



Steph Morgan

Steph is our Careers Adviser and has a wealth of experience within Careers Education Advice and Guidance. She is able to advise young people on the range of opportunities available to them, and works closely with employers to ensure that students are able to access work placements that fit their individual needs. Caroline supports students to apply for jobs and apprenticeships, including advice around CVs and interviews.

Introducing the Job Coaches and Learning Support Assistants

The role of the Job and Skills Coach is to be an advocate for students and provide appropriate support to ensure each one achieves maximum success during their time in the Sixth Form at Combe Pafford School. The Job and Skills Coach will act as a Learning Support Assistant during the taught lessons at school, be the main point of contact and support for students whilst they are on work placements and be responsible for the supervision and liaison of any vocational course the student undertakes.

Carole McClarron



Claire Johnson



Michelle Tuci



Amanda Bellamy



Sam Yeates



Vicky Hulbert



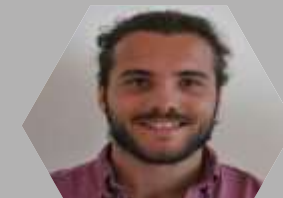
Sue Parsons



Anna Kilner



**Rebecca Gabriel
Maths LSA**



**Matt Cotton
English LSA**



**Lisa Hutchins
Maths LSA**

Admissions Policy, Entry Requirements and How to Apply

Admission arrangements for pupils wishing to transfer into the Sixth form at the end of year 11

1. Copies of the Sixth Form prospectus and application forms are available from the School Office and can also be viewed or downloaded from the school website.
2. Applicants must complete the application form by the end of the Spring term. Applications received after this date will only be considered after the allocation of places has taken place and if there are still vacancies.
3. Application forms should be signed by both the pupil and the parent or carer.
4. In year applications will be considered, at any time in the school year, only if there are vacant places.
5. There will be an opportunity to visit prior to admission.
6. If required, individual appointments can be made in the Spring Term to discuss options and choices.
7. There are a fixed number of places available in the sixth form, which presently is 60. It may be possible to exceed this number in exceptional circumstances but only with the approval of the LA.
8. There are no formal entry requirements for a place in the Sixth Form although all applicants must be motivated to learn new skills. Students applying for one of the vocational pathways must also be able to demonstrate their work readiness or work potential.

How admissions will be prioritised

- Pupils presently in Year 11 at Combe Pafford School who are considered by the school to be suitable for either the Work Ready course or the Preparation for Working Life course.
- Pupils from outside the school who have an Educational and Health Care Plan which identifies their primary difficulty as Moderate Learning Difficulty who are considered by the school to be suitable for either the Work Ready course or the Preparation for Working Life course. A higher priority will be given to Children Looked After (CLA). Educational references will be sought to ensure the offer is appropriate.
- Pupils with an EHCP, who in consultation with the LA, are considered suitable for either course or who it may be possible to create a bespoke course.

Pupils/Parents are required to accept or decline the offer of a place within two school weeks of the offer being made. If this is not completed on time the school reserves the right to offer the place to another student.

It should be noted that travel to and from school and work placements are the responsibility of the parent/ carer. The school can assist with travel training if needed. Small bursaries may be available, details on request.

You also need to be confident to travel independently or to be working towards using public transport either to come to the sixth form and/or work experience/ voluntary work.

Bursaries

The school is allocated a small amount of Bursary funding, to support students financially with travel. This is allocated on a needs basis and all students will be assessed individually at the discretion of the school by completion of an application form.

For further information contact:

kmills@combepafford.torbay.sch.uk

Appeals

The student and/or the parents have the right to appeal if they are not offered a place. The appeal will be held firstly with the Head Teacher, and if not resolved then with a Panel of three Governors. After this an appeal can be made via a legal tribunal (information can be obtained from Torbay Local Authority SEN office).

Enrichment Opportunities

There are many additional opportunities for students to take advantage of that enhance and enrich their programme in the Sixth Form and further their independence and experience. More detailed information about the activities below can be found on the school website.



National Apprenticeship Show



Driving Lessons



Outward Bound Scholarship



Motorcycle Competence



Social Events



European Residential



Ten Tors Jubilee Challenge



Inspirational Trips



Lessons from Auschwitz Project



Your journey starts with us!
Come and join us!



For an application form and further details,
please contact us at school:

Combe Pafford School, Steps Lane,
Watcombe, Torquay, Devon, TQ2 8NL

Phone: (**01803**) **327902** | **321807** | **321802**

E-mail: **6thformoffice@combepafford.torbay.sch.uk**

Keep up with our news at **www.combepaffordschool.co.uk**