

# City & Guilds

## City + Guilds Level 1 Award / Certificate in Practical Horticulture Skills

**July** Unit 104

Water a bed, border or area of plants in containers using hand held equipment



**September** Unit 101

Prepare ground for seeding or planting



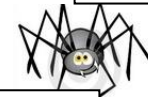
**November** Unit 103

Apply organic mulch to a bed or border



**October**

Halloween  
Spider plants



**Unit 148**

Use a leaf  
litter  
blower.



**December** Unit 110

Prepare and plant a  
container for display



**March** Unit 123

Sow seeds indoors in  
containers



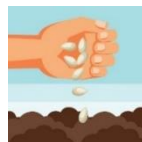
**April** Unit 124

Prick out seedlings  
singly



**May** Unit 122

Sow seeds outdoor  
in drills by hand



**February**

Valentines day  
roses



**March**

Mother's Day  
flowers



**June** Unit 102

Plant container grown  
subjects



**Unit 144**

Use a rotary mower.



**July** Unit 104

Water a bed, border or area of plants in containers using hand held equipment



**September** Unit 101

Prepare ground for seeding or planting



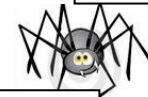
**November** Unit 103

Apply organic mulch to a bed or border



**October**

Halloween  
Spider plants



**Unit 148**

Use a leaf  
litter  
blower.



**December** Unit 110

Prepare and plant a  
container for display



**March** Unit 123

Sow seeds indoors in  
containers



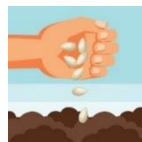
**April** Unit 124

Prick out seedlings  
singly



**May** Unit 122

Sow seeds outdoor  
in drills by hand



**February**

Valentines day  
roses



**March**

Mother's Day  
flowers



**June** Unit 102

Plant container grown  
subjects



**Unit 144**

Use a rotary mower.

